

KS1 Curriculum Information - Summer 2026 - Coastline



In the **Coastline** project, your child will use maps to learn about the location of the world's seas and oceans and keys to learn about map symbols. They will also find out about the directions on a compass. They will learn about the human and physical features of a coastline, including the effects of erosion and how to stay safe when visiting the coast. They will have the opportunity to learn about the work of the RNLI, what happened to the SS Rohilla and about the coastal town of Whitby, including how Captain Cook is linked to the town. They will research the tourism industry and consider what features make a place a successful tourist destination.

Flower Heads (Summer 1) - This project teaches children about the visual elements of flowers, including shape, texture, colour, pattern and form. They also explore various artistic methods, including drawing, printmaking and 3-D forms, using paper and clay.



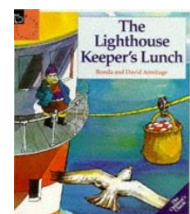
In this Science **Uses of Materials** project (Summer 1), your child will learn the names and uses of everyday materials. They will find that materials can be shaped in different ways to make them more useful. They will test how different materials can be shaped and whether they will return to their original shape. They will learn that the properties of materials mean they can be used in different ways and that objects are made from materials that have suitable properties for their purpose. They will find that objects can be made from one material or more than one material and that the same object can be made from different materials with similar properties. Your child will label objects with their materials and think about their properties and uses. They will learn about paper and test the properties of different paper types. They will also find out about recycling and sustainability.

In the **Plant Survival** project (Summer 2), your child will learn the names of the different parts of a plant and how they grow. They observe how the seasonal changes affect how plants grow. They will learn how new plants can grow from seeds and bulbs and what they need to germinate. They will use their observational skills to find out where plants like to grow and investigate what plants need to grow and stay healthy. Your child will then use their research skills to find out about some unusual plants.



Our **Design and Technology** project for Summer 2 is **Beach Huts**. This project teaches the children about making and strengthening structures, including different ways of joining materials.

English - In Summer 1, our English narrative writing will be centred round the story 'The Lighthouse Keeper's Lunch' by Ronda and David Armitage. Your child will study this text all about Mr Grinling and some very cheeky seagulls! Will Mr Grinling be able to defeat the pesky gulls that keep stealing his lunch? The children will then plan and write their own version of the story. Our non-fiction work will be a diary entry from the character of Mr Grinling in the 'Lighthouse Keeper's Lunch.' In Summer 2, our narrative writing will be based on the story, 'Clem and Crab' by Fiona Lumbers. In this story Clem finds a crab and takes it on a journey to the city where she lives, but wouldn't crab be happier in his natural environment? Our non-fiction work will be a piece of persuasive writing titled, 'Come and Visit Whitby.'



Maths - This term the Year 1s will be looking at multiplication and division; fractions, position and direction, number place value (within 100), money and time.

The Year 2s will be exploring fractions, position and direction, time and statistics.

R.E – In RE your child will explore the big question, 'what makes some places sacred', learning how places like churches, mosques, and synagogues are special to believers and treated with respect. They will find out why people visit these places for worship, celebration and quiet reflection.

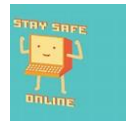


PSHE – In Summer 1 our unit of learning is **Citizenship**. Within this unit your child will be exploring: why rules are important; caring for animals; the needs of others; how we are the same yet different; belonging to groups; and democratic decisions. In Summer 2 our unit of learning will be **Transition** where the children will be discussing achievements from the year and what they'd like to achieve in the next year group.

Computing –

Summer 1 – ScratchJr; Stop motion: Online Safety

Summer 2 - Data Handling, International Space Station & Online Safety



Music – The children will be following the whole school model music curriculum, 'Charanga' and we will be looking at the following units:

Y1 – **Having Fun with Improvisation; Let's Perform Together!**

Y2 – **Exploring Improvisation; Our Big Concert.**

P.E – This term your child will be learning how to hit and return a ball with some consistency in their **Send and Return** lessons. During their **Run, Jump, Throw** lessons they will be developing power, agility, coordination and balance.

Please wear P.E kits to school on the days that your class has their P.E lessons.

P.E kits should consist of a white t-shirt, black/navy shorts and trainers. On colder days, your child may wear a matching black/navy tracksuit or black/navy joggers or leggings with a school jumper. Any child with long hair must have it tied back on P.E days. Earrings must be removed at home on P.E days.

P.E days in KS1 are as follows:

ZM Y1: Monday (indoor) and Wednesday (outdoor)

EW Y2: Tuesday (indoor) and Friday (outdoor)

Y1 Phonics – The children will be revising all of their learning in preparation for the Y1 Phonics Screening Check.

Y2 Spellings – The children will be following the whole school spelling scheme **Spelling Shed**. They will be given new spellings to learn each week.

We will continue to collect the children from the playground at 8:50am so that they can be in class for a prompt register and ready to start learning. Please make sure that your child arrives at school on time. The end of the day for the children is 3:25pm unless other arrangements have been agreed with the class teacher. Please note, there is no supervision on the playground until 8:50am and the children should not be on the play equipment before or after school.

Please make sure your child has a water bottle in school every day along with their reading folders. All items of clothing should be clearly labelled with your child's name, including coats and shoes.

Thank you for your continued support. Please do not hesitate to contact your child's class teacher if you have any concerns or questions.

Thank you

KS1 Team