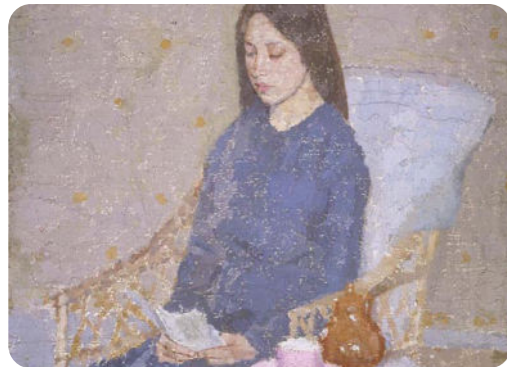


# People and Places

## Human form in art

The artist's interest in the human form has endured for thousands of years. Representations of human figures have been discovered from prehistoric cave paintings right through history until the present day. These figures can inform us about the cultural, religious or everyday life of different societies. Pictures of human figures can be figurative, abstract or photographed.



*The Convalescent* by Gwen John, c1923



*The Model* by Lyubov Popova, 1913



*Naples, Italy – Children* by Herbert List, 1961

**Figurative forms** portray their subjects, which are generally posed, as accurately as possible.

**Abstract forms** distort their subjects by using simplified shapes and patterns.

**Photographs** capture their subjects, often unposed, in a single moment.

## Urban landscapes



*The Ideal City* by Fra Carnevale, c1480–1484

Urban landscapes are drawings of towns and cities shaped by the people and buildings found there. Different atmospheres are created using bright, dark or muted colours and sharp or blurry lines.

## LS Lowry

LS Lowry was an artist who lived from 1887 to 1976. He was famous for his simplistic, elongated figure drawings and paintings of the industrial urban landscapes of Manchester in the north of England.



*Going to Work* by LS Lowry, 1959

## Drawing with detail

Many artists are fascinated with the finer details of the human figure. This was especially popular during the Renaissance, when links between art and science inspired artists to draw anatomically correct representations of the human form. Some artists focused on just one part of the body, such as Albrecht Dürer, who created many hand drawings.



## Glossary

<b>abstract</b>	A distorted representation consisting of shapes and patterns.
<b>anatomy</b>	The study of the structure of animals' bodies, including humans.
<b>elongated</b>	Unusually long and thin.
<b>muted</b>	Soft in colour instead of bright.
<b>posed</b>	Arranged in a particular position.
<b>Renaissance</b>	A period in the 14th to 17th centuries when there was interest in art, science and literature.
<b>subject</b>	A person or thing that is being described.

