

Romanby Primary School
The Close
Romanby
Northallerton
North Yorkshire
DL7 8BL

Headteacher: Mr. J. Foxwell

Telephone: 01609 781178

www.romanby.n-yorks.sch.uk

Email: admin@romanby.n-yorks.sch.uk

KS1 Curriculum Information - Autumn 2024

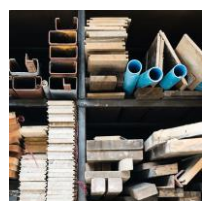
Welcome back to an exciting new school year! The following gives some information about the learning taking place this term.



In the **Childhood** project, your child will learn words and phrases related to the passage of time. They will explore artefacts to help them to understand childhood in the past and how childhood has changed over time. They will explore the different stages of life and explore timelines and family trees. Everyday life in the 1950s will be explored, including shopping, transport, family life and childhood. They will also learn about the significance of Queen Elizabeth II's coronation in 1953 by studying photographs and online sources.

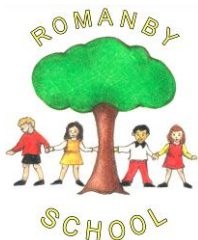
The children will use maps to explore how places have changed over time and highlight any similarities or differences between childhood today and childhood in the 1950s. At the end of the project, they will create knowledge organisers for children who are about to study the topic of childhood.

Mixing Colours (Autumn 1) - This Art project teaches children about basic colour theory by studying the colour wheel and colour mixing. It includes an exploration of primary and secondary colours and how artists use colour in their artwork.



In this Science **Everyday Materials** project (Autumn 1), your child will learn that materials are what objects are made from. They will observe and identify objects made from different materials in places familiar to them, such as their home and school. They will name and use their senses to explore a range of natural materials using hand lenses and digital microscopes, learning that natural materials come from the world around us, including the ground, plants and animals. They will name and use their senses to explore a range of objects made from human-made materials, learning that they are new materials made by people from natural materials. They will write scientific questions about a chosen object made from a human-made material, its features and its use in the object, revisiting their questions during the project to see if they can identify the answers as their knowledge builds over time. They will compare a range of objects made from different materials, putting them into groups according to their similarities and differences and explaining their groups. They will identify the properties of a range of materials, learning that materials can be described by their properties and that a property is a quality a material has that makes it suitable for a particular use. They will follow instructions and conduct various tests to determine different materials' properties. They will complete Venn diagrams, sorting objects according to the properties of their materials. They will





Romanby Primary School
The Close
Romanby
Northallerton
North Yorkshire
DL7 8BL

Headteacher: Mr. J. Foxwell

Telephone: 01609 781178

www.romanby.n-yorks.sch.uk

Email: admin@romanby.n-yorks.sch.uk

complete their learning by investigating materials to determine which have suitable properties to make bunting, which will be used to decorate the school grounds.

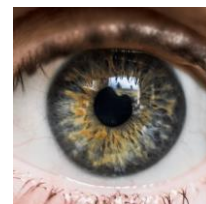


In the Geography **Our Wonderful World** project, your child will learn the meaning of the terms geography, physical feature and human feature. They will use maps, including picture maps, globes, online mapping tools and world maps. Your child will learn to use positional language, such as next to and behind, and directional language, such as forwards and backwards. They will also become familiar with the cardinal compass points, north, south, east and west. Your child will learn the names and positions of the continents and oceans of the world and understand the terms equator, Northern Hemisphere and Southern Hemisphere. They will also know the location of some hot and cold places. They will study maps to learn the names, capital cities and positions of the four countries of the United Kingdom and find out the characteristics of a village, a town and a city. They will study aerial photographs and spot familiar areas of their locality from above. Your child will carry out simple fieldwork to find out about local physical and human features.



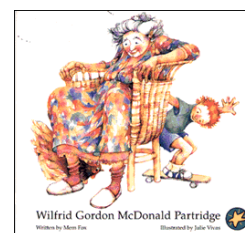
Funny Faces and Fabulous Features (Autumn 2) - This Art and Design/Design & Technology project teaches children about the concept of the portrait and how the collage technique can be used to make a portrait.

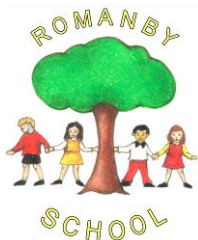
Human Senses (Autumn 2) - This Science project teaches children that humans are a type of animal, known as a mammal. They name body parts and recognise common structures between humans and other animals. They learn about the senses, the body parts associated with each sense and their role in keeping us safe.



Shade and Shelter (Autumn 2) - This Design and Technology project teaches children about the purpose of shelters and their materials. They name and describe shelters and design and make shelter prototypes. Children then design and build a play den as a group and evaluate their completed product.

English – In Autumn 1, our English narrative writing will be centred round the inspiring text, 'Wilfrid Gordon McDonald Partridge' by Mem Fox. Your child will study this text, about a boy who helps an elderly friend to regain some of her memory, then plan and write their own version of the story. In the first half term, our non-fiction writing will be based on autobiographies, we will use the information from the story of 'Wilfred





Romanby Primary School
The Close
Romanby
Northallerton
North Yorkshire
DL7 8BL

Headteacher: Mr. J. Foxwell

Telephone: 01609 781178

www.romanby.n-yorks.sch.uk

Email: admin@romanby.n-yorks.sch.uk

Gordan McDonald Partridge to support this. We will also be exploring and creating riddles. In Autumn 2, our narrative writing will be based on the story, 'Old Bear' by Jane Hissey. 'Old Bear' tells the classic tale of how a much-loved teddy bear is lost and finally found again. Our non-fiction writing will be centred around the text 'Here We Are' by Oliver Jeffers. In this story the children will explore beautifully illustrated notes on everything you need to know about living on Earth. We will use this text to write instructions on how to live on Earth.

Maths – This term in Maths, the Year 1's will be learning about: number place value (within 10); addition and subtraction (within 10); shape; and number place value (within 20). The Year 2's will be learning about: number place value (within 100); addition and subtraction (within 100); shape; and money.

R.E – In RE your child will be exploring the big questions. '**Who is Jewish and what do they believe?**' and '**How and why do we celebrate special and sacred times?**'

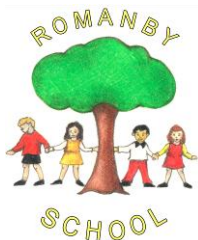
PSHE – Your child will cover two units of PSHE this term: **Family and relationships** and **Health and wellbeing**. Within these units they will be exploring how families can be different and the characteristics and impact of positive friendships. This will involve learning that issues can be overcome, that people show feelings differently and that stereotyping is unfair. They will also gain a deeper understanding of emotions, along with identifying their strengths and qualities, and learning about the many ways they can stay healthy.

Computing – In Autumn 1, your child will be looking at **Improving Mouse Skills**. They will develop mouse skills by learning how to log in and learn how to navigate around a computer while creating digital artwork. In Autumn 2, your child will be thinking about **Algorithms Unplugged**. They will learn what algorithms are and use logical reasoning to predict the behaviour of simple algorithms.

Music – The children will be following the whole school model music curriculum, 'Charanga' and we will be looking at the units **My Musical Heartbeat** and **Dance, Sing and Play**.

P.E – This half term your child will be exploring space, direction, levels and speeds and performing with different body parts when partaking in their indoor **Dance** lessons. During their outdoor **Attack, Defend, Shoot** lessons they will be practicing different ways of moving, along with engaging in competitive activities. In the second half term your child will be developing their strength in order to carry out and make different **Gymnastics** actions and shapes (indoor). Within their outdoor **Hit, Catch, Run** lessons your child will be learning to hit objects with their hand or a





Romanby Primary School
The Close
Romanby
Northallerton
North Yorkshire
DL7 8BL

Headteacher: Mr. J. Foxwell

Telephone: 01609 781178

www.romanby.n-yorks.sch.uk

Email: admin@romanby.n-yorks.sch.uk

bat. They will also be practising tracking and retrieving a rolling ball, along with throwing and catching a variety of balls and objects.

Please wear P.E. kits to school on the days that your class has their P.E lessons.

P.E kits should consist of a white t-shirt, black/navy shorts and trainers. On colder days, your child may wear a matching black/navy tracksuit or black/navy joggers or leggings with a school jumper. Any child with long hair must have it tied back on P.E days. Earrings must be removed at home on P.E days.

P.E days in KS1 are as follows:

ES Y1: Monday (outdoor) and Friday (indoor)

EW Y2: Tuesday (outdoor) and Friday (indoor)

Homework

Y1:

'Learn to Read' phonics reading book - 5-10 minutes x5 weekly

Phonics Sounds and HRS words (tricky words) - 5 mins x5 weekly

Additional Phonics Screening Check practise will be sent home in Spring 2/Summer 1.

Y2:

'Learn to Read' phonics reading book - 5-10 minutes x5 weekly

Spelling practise using Shed/Spelling books - 5 mins x5 weekly

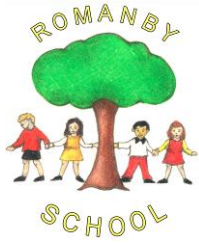
CPG Reading Comprehension and Maths booklets - please complete one test from each booklet weekly

Times Table Rock Stars practise 5-10 minutes weekly

We will be working hard to establish our routines quickly so that the children become familiar with our schedule. As a part of this, we will collect the children from the playground at 8:50am so that they can be in class for a prompt register and ready to start learning. Please note, in order to safeguard all of the children, we politely request that you do not come into school on a morning please. There will be an adult at the door to help if you have any questions or queries or you can speak to the office staff via the main entrance.

The end of the day for the children will be 3:25pm unless other arrangements have been agreed with the class teacher. Please note, there is no supervision on the playground until 8:50am.





Romanby Primary School
The Close
Romanby
Northallerton
North Yorkshire
DL7 8BL

Headteacher: Mr. J. Foxwell

Telephone: 01609 781178
www.romanby.n-yorks.sch.uk
Email: admin@romanby.n-yorks.sch.uk

Please make sure your child has a water bottle in school every day along with their reading folders. All items of clothing should be clearly labelled with your child's name, including coats and shoes.

Year 1 are looking for parent/carer/grandparent volunteers to help us with putting new letters and sounds and harder to read and spell words into the children's books. If you can spare an hour once a week on a regular basis, please let Mrs Seal know.

Thank you for your continued support. Please do not hesitate to contact your child's class teacher if you have any concerns or questions.

Thank you.

KS1 Team

